

# TO LET

Ground and First Floor

1,658 sq.ft (154 sq.m)

14m  
footfall



Immediate Viewing Request 07843 560347

## Phase 2 Unit 106b, The Centre, Livingston, EH54 6HR

- Ground and first floor retail premises
- Inbetween Caeser & Howe and Nationwide
- Other nearby retailers include Card Factory, Deichmann, Quiz and H&M

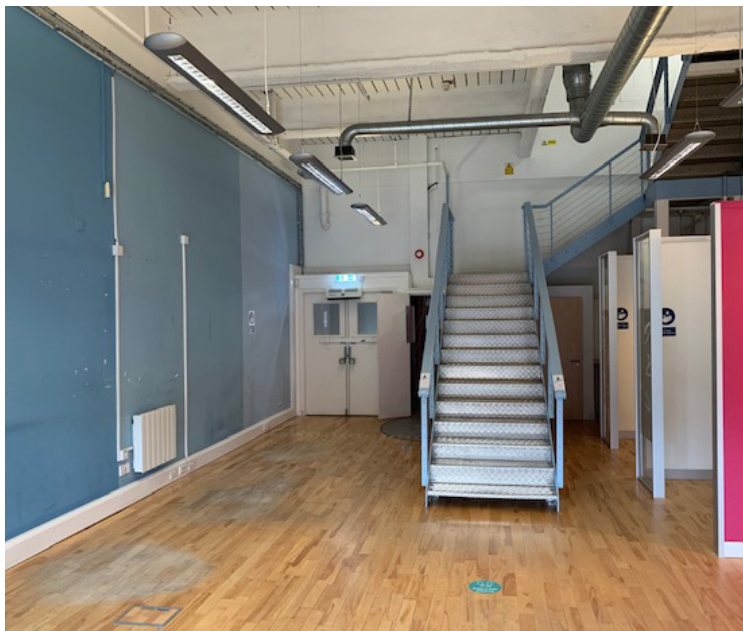
Areas (approx. NIA)	Sq.ft	Sq.m
Ground Floor	840	78
First Floor	818	76
<b>TOTAL</b>	<b>1,658</b>	<b>154</b>

### Description

The Centre Livingston offers 7,200 car parking spaces. With key fashion anchors including Flannels, River Island, Primark, JD, M&S, H&M and Schuh. The Centre is the natural choice for the fashion-conscious shopper. This offer is bolstered by other popular retailers such as Boots, Superdrug and F&B outlets including Five Guys, Wagamama, Nando's, Subway and Greggs. It benefits from circa 1,166,666 visitors a month.

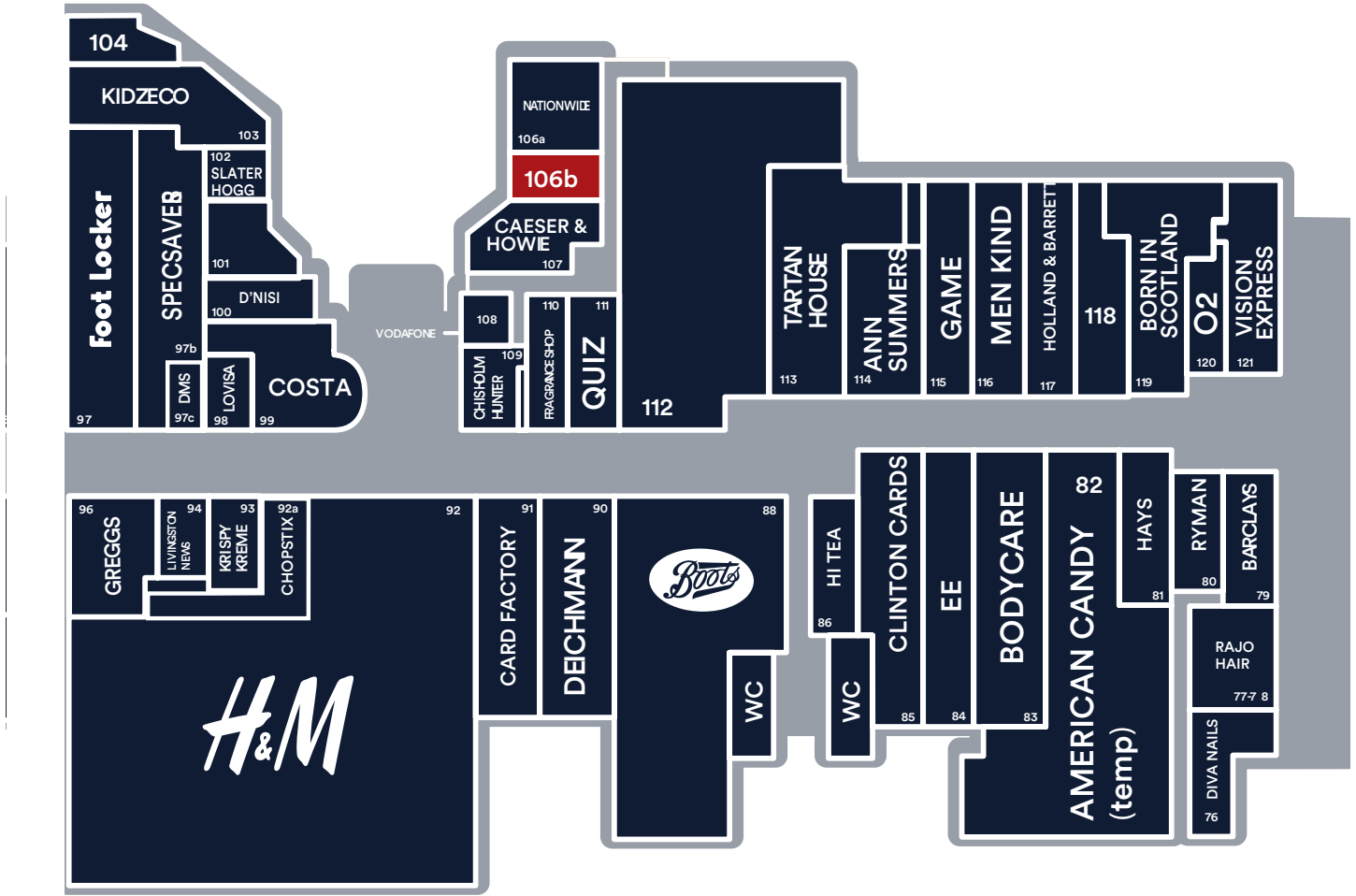
### Location

Approximately 14 miles west of Edinburgh and 35 miles east of Glasgow. Livingston has key transport links to both cities by way of a central bus terminal, two train stations and connections to Scotland's central road network.





## Phase 2 Site Plan



### Rent

£30,000 pa.

### Rates

Rateable Value TBC. Rates Payable TBC. Interested parties are advised to contact the local authority to confirm their liabilities and any transitional relief.

### Services

Electricity, water and drainage are connected to the property.

### Service Charge & Insurance

This unit participates in a service charge per annum. Insurance TBC per annum. The Landlord will insure the premises the premiums to be recovered from the tenant.

### Energy Performance

Further information available upon request.

### Planning

It is the incoming tenant's responsibility to verify that their intended use is acceptable to the Local Planning Authority.

### Legal Costs

Each party is responsible for their own legal costs in connection with the granting of a lease.

**Viewing** Strictly via prior appointment with the appointed agents:

**savills.co.uk/retail**   
**0131 247 3800**

**Stuart Moncur** 07887 795506  
Stuart.moncur@savills.com

**Charlie Hall** 07807 999693  
Charlie.hall@savills.com

**EYCO**  
**0131 226 2641**  
[www.eyco.co.uk](http://www.eyco.co.uk)

**Alastair Rowe** 07747 747280  
arowe@eyco.co.uk

**Alexandra Campbell** 07425 335353  
acampbell@eyco.co.uk

Owned and Managed by

**LCP.**  
part of **MI Core**

**01384 400123**

[searchlcp.co.uk](http://searchlcp.co.uk)



**Rakesh Joshi** 07741 385322  
RJoshi@lcpproperties.co.uk